

LIBERIA TO LA FORTUNA MAP & VISUAL DIRECTIONS

Direction from Liberia to La Fortuna:

From the rental car office, drive to the Interamerican Highway (#1) and drive south direction Bagaces, pass the town and drive towards Cañas where you will make a left turn direction Tilaran. Pass the town and drive around Arenal lake, pass Nuevo Arenal town and keep on driving to La Fortuna. **Driving time:** 4 hours



LIBERIA TO SAMARA BEACH MAP & VISUAL DIRECTIONS

Driving from Liberia to Samara Beach:

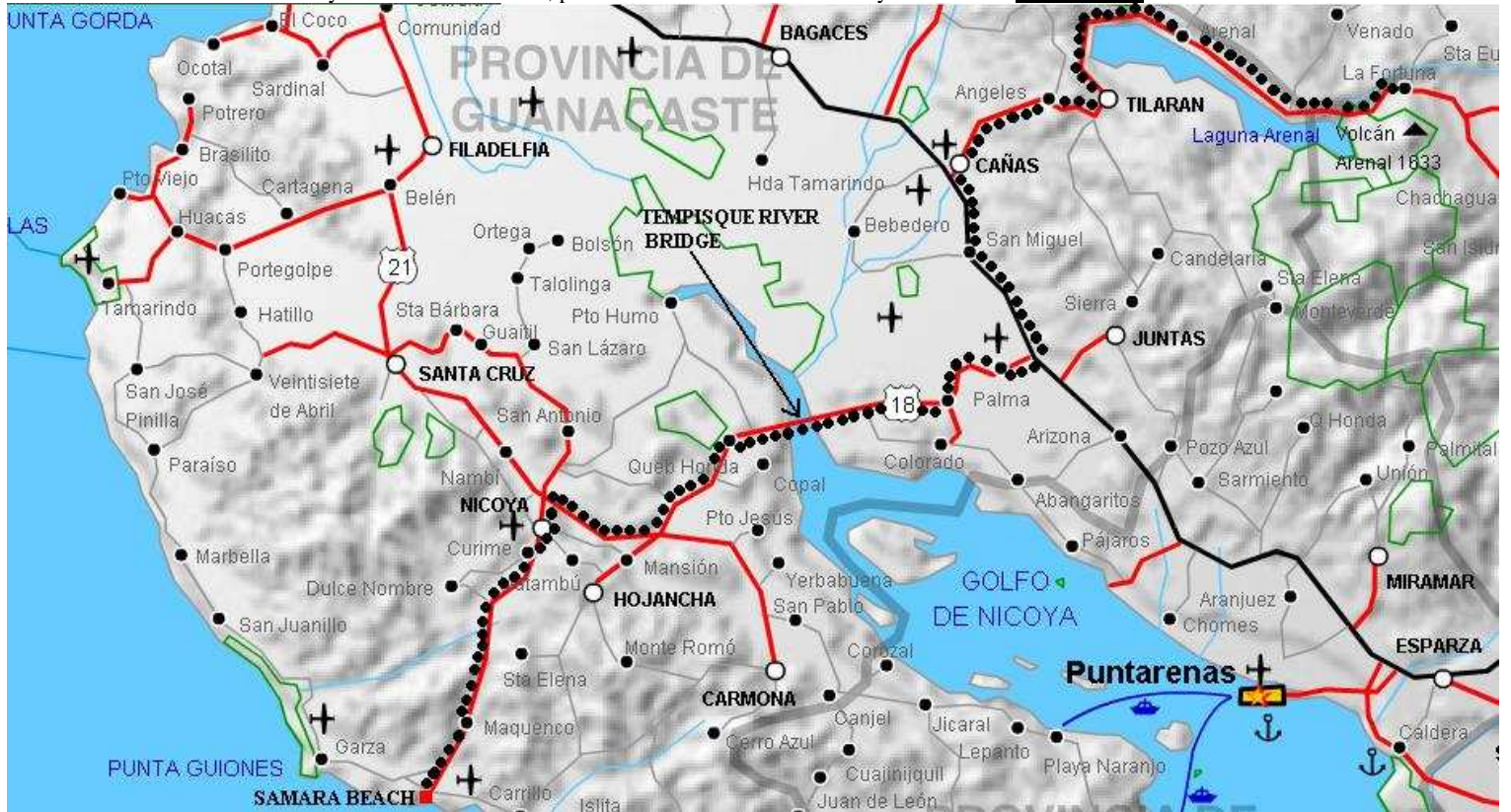
From the rental car office, drive south towards Cañas and keep on driving south until you see a sign which says Tempisque River bridge. Turn right at the road and after crossing the new bridge, continue north to Nicoya. In Nicoya, head more or less straight through town until you see signs for Playa Sámara. From there, it's a paved road almost all the way to the beach and the little village. **Driving time:** 3 ½ hours



SAMARA BEACH TO LA FORTUNA MAP & VISUAL DIRECTION

Driving from Samara beach to La Fortuna or vice versa:

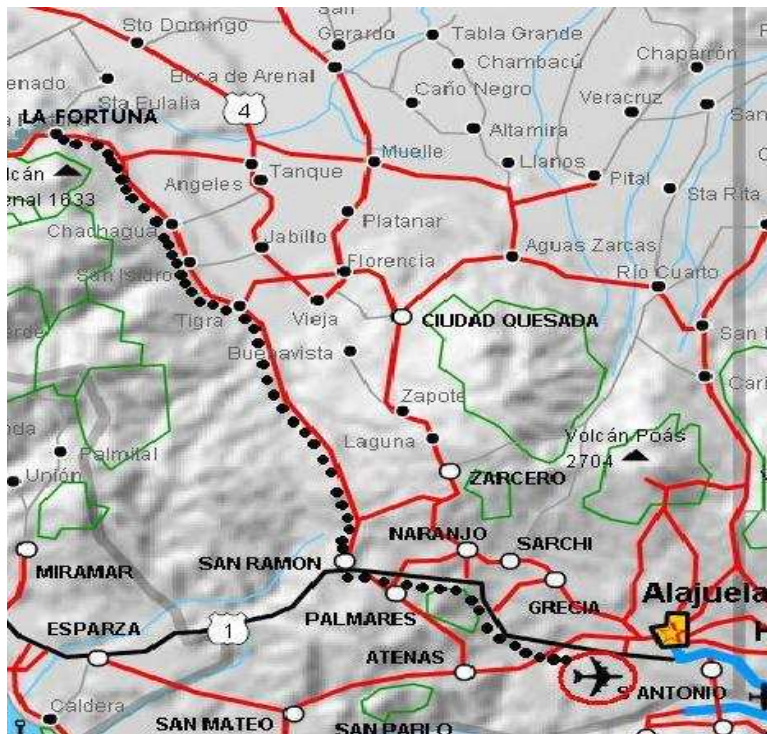
From Samara beach heads towards Nicoya, go through the town and find signs for Tempisque River bridge, cross the new bridge and drive until you reach the Interamerican Highway, turn left direction Cañas and turn right in Cañas direction Tilaran then drive towards Nuevo Arenal. Pass the little town and drive all around Arenal lake until you see Tabacon resort, pass it and La Fortuna will be only a few miles. **Driving time:** 4 ½ hours



SAN JOSE TO LA FORTUNA MAP & VISUAL DIRECTIONS

Driving from San Jose to La Fortuna:

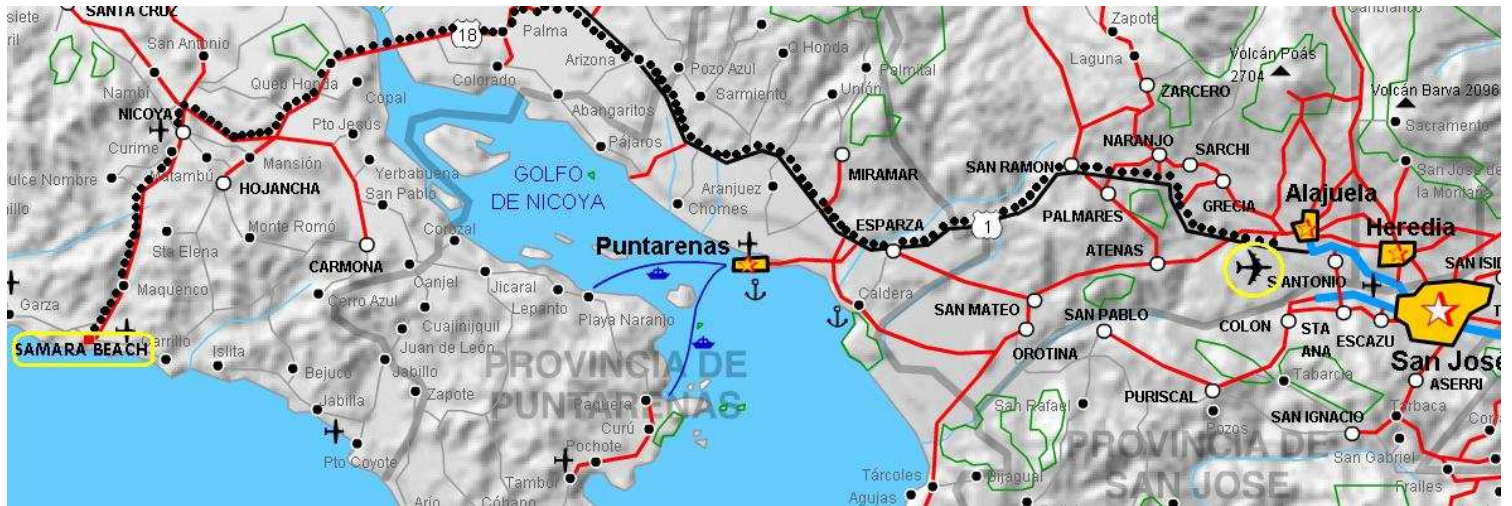
From the rental car office, drive direction San Ramon where you will make a right turn towards San Ramon Downtown (Help: New mall on the right corner). Drive straight until the street dead ends, make a left turn and a quick right turn towards Arenal Volcano/Tabacon Resort. Follow the signs for Tabacon Resort/La Fortuna, Arenal Volcano until you cross the last little bridge *at the entrance of La Fortuna village*, make a left turn at the stop sign, and drive direction Villa Vista Arenal (½ mile on the right) or Montana de fuego (3 miles on the right). **Driving time:** 3 ½ hours.



SAN JOSE TO SAMARA BEACH MAP & VISUAL DIRECTIONS

Driving from San Jose to Samara Beach:

From the rental car office, drive direction towards the Interamerican Highway (ask Toyota Rental car a map). Forty-seven kilometers (29 miles) past the turnoff for Puntarenas, you'll see signs and the turnoff for the new Tempisque River bridge. After crossing the bridge, continue north to Nicoya. In Nicoya, head more or less straight through town until you see signs for Playa Sámar. From there, it's a paved road almost all the way to the beach and the little village. **Driving time:** 4 ½ hours



SAN JOSE TO MANUEL ANTONIO BEACH / QUEPOS MAP & VISUAL DIRECTIONS

Direction from San Jose to Manuel Antonio / Quepos:

From the rental car office, drive direction ATENAS, pass the small town and keep on driving towards Sam Mateo, curve direction Orotina and drive south to Jaco beach, pass it and after you are passing Parrita, you will be passing bunches of strange and scary bridges (18 wheelers are going thru every day, do not worry). Before coming to Quepos, you will see a sign indication Airport, if you turn towards that road you will be going to our resort, if you are going straight you will be ending at Quepos, small & great town where Manuel Antonio beach and national park dead ends. This is Paradise!!! Welcome home...

